



1 OF 2

2005 CHEVROLET EXPRESS SERVICE UTILITY MECHANIC TRUCKS

\*\*2001 FORD CROWN VICTORIA LX SEDAN, 4.6L gasoline, automatic, AC, PW, PDL, PM, 142,141 miles. s/n: 2FAFP74W51X145458

\*\*2001 BUICK LE SABRE SEDAN, 6-cyl. gasoline, automatic. s/n: 1G4HP54K81U290551

\*\*2000 LEXUS ES300 SEDAN, 3.0L gasoline, automatic, AC, PW, PDL, PM, 91,518 miles indicated. s/n: JT8BF286Y5081093

2000 FORD TAURUS SEDAN, 3.0L gasoline, automatic, AC, PW, PDL, PM, 55,037 miles indicated. s/n: 1FAFP5222YA238879

1999 CHEVROLET CAVALIER SEDAN, gasoline, automatic. s/n: 1G1JC5243X7306743

1999 CHEVROLET CAVALIER SEDAN, gasoline, automatic. s/n: 1G1JC5242X794214

\*\*1999 MAZDA 626 SEDAN, 2.5L gasoline, automatic, AC, PW, PDL, PM, s/n: 1YVGF22D8X5901987

\*\*1996 MERCURY SABLE GS SEDAN, 3.0L gasoline, automatic, AC, PW, PDL, PM, s/n: 1MELM50UXTA627710

\*\*1996 MERCURY GRAND MARQUIS SEDAN, 4.6L gasoline, automatic. s/n: 2MELM74W0TX695349

\*\*1996 FORD MUSTANG GT CONVERTIBLE COUPE, 4.6L gasoline, automatic. s/n: 1FALP45X5TF111835

\*\*1982 BUICK RIVIERA COUPE, gasoline, automatic. s/n: 1G4AZ57Y4CE421984

\*\*2003 VOLVO XC70 WAGON, 2.5L gasoline, automatic, AC, PW, PDL, PM, s/n: YV1S259HX31099102

**EQUIPMENT TRAILERS**

2004 LOAD MAX GOOSENECK HYDRAULIC TILT DECK EQUIPMENT TRAILER, 22' hydraulic tilt deck. s/n: 5L8TD02241000863

1985 TRAILKING EQUIPMENT TRAILER, 8.5' x 20' deck, 4' beavertail w/ramps. s/n: 1TKC02425FM045708

1990 MFD TILT DECK EQUIPMENT TRAILER, 18' tilt deck. s/n: A2347069

**OFFICE/UTILITY TRAILERS**

M-56 OFFICE TRAILER, 57' x 12', (3) rooms, bathroom. s/n: 22016

NORCAL 5' x 10' TILT DECK UTILITY TRAILER. s/n: 1N9F101TXG1015217

SPCNS GOOSENECK CAGE TRAILER, 94' x 168' deck, 68' sides. s/n: CA501135

**WATER TRAILER & TANK**

2014 UNUSED DOGHOUSE 500-LP 500 GALLON WATER TRAILER, 2' pad drum brakes on dual axle, heavy duty, polyurethane tank, portable water, equipped with Honda 5.5 hp. gasoline engine, 2' pump, 156 GPM @ 65 PSI, 2" cam-lock for 2" fire hydrant inlet hose. \*\* (BILL OF SALE ONLY) \*\*

2014 UNUSED DOGHOUSE 500 GALLON SKID TANK, polyurethane tank, Honda 5.5 hp. gasoline, 2' pump, 156 GPM @ 45 PSI. \*\* (BILL OF SALE ONLY) \*\*

**BOAT**

1970 ROHR INDUSTRIES 65' PATROL VESSEL, 17.5' beam, 7' depth, 57 gross tons, (2) Cummins 05K-19 turbo charged 750 hp. diesel engines, 2,500 gallons reported fuel capacity, 200 gallons reported fresh water capacity, aluminum hull, navigation station at both helm stations, Furuno NavNet "3D" operational depth sounder and GPS, (2) single staterooms, (2) double staterooms, galley. Port s/n: 38730404, starboard s/n: 37730112 (Online Only, Located in Moss Landing, CA)



2014 UNUSED DOGHOUSE 500-LP 500 GALLON WATER TRAILER

**UTILITY CART**

2006 KAWASAKI 3010 UTILITY CART, 4x4, dump bed. s/n: JK1AFCE156B544507

\*\* (Online only, Located in Lakeside, CA) \*\*

**ROLL-OFF CONTAINERS & RECYCLE BINS**

(4) ROLL-OFF BINS, 24' x 8' x 9'. ROLL-OFF BIN, 24' x 8' x 8'. (2) ROLL-OFF BINS, 22' x 8' x 9'. (2) ROLL-OFF BINS, 20' x 8' x 6'. (14) RECYCLE BINS

**UNUSED & RECAP TIRES**

(4) UNUSED 12-PLY 12X16.5 TIRES, fits skidsteer. UNUSED SOLID TIRE 10X33

(2) UNUSED TIRES, 195/60R14; UNUSED TIRE, 195/60R15; UNUSED TIRE, P215/70R15; (4) UNUSED TIRES Q225/55R17; (2) UNUSED TIRES, 265/70R17. UNUSED TIRE, 14/17.5 ML; UNUSED TIRE, 12/16.5.

(3) UNUSED SAILUN TIRES, 235/75R17.5. (3) UNUSED TIRES, 215/75R17.5. (3) UNUSED MICHELIN TIRES, 255/80R22.5. UNUSED TIRE, GL283A; (2) UNUSED TIRES, 9R22.5.

(4) UNUSED TIRES, 225/70R19.5. (3) UNUSED TIRES, 285/75R24.5. UNUSED TIRE, 265/70R19.5; (2) UNUSED TIRES, 215/75R17.5.

**MISCELLANEOUS**

Unused Submersible Pumps; Unused Concrete Vibrators; Unused Diamond Blades; Unused Propane Tanks; Unused Ironing Boards; Unused Heavy Truck Tires; Unused Baghouse Filter Socks; SKF Spherical Roller Bearings; Micro Motion Sensor; Sheave Pulleys; Motor Couplings; MORSE Jaw Crusher; ANGSTROM Mill; Spools of Flat-Flex Cable; Spools of Electrical Wire; STERLING Peerless Pumps; Jackets; Metal Storage Cabinets; Hazmat Cabinets; 6' Round Tables; Metal Work Benches; KARCHER Pressure Washer; TITAN Airless Paint Sprayer; MULTIQUIP Cutoff Saws; BOSTITCH Air Nailer; TAUNAMI Submersible Pumps; LINCOLN Ranger Welders; Hydraulic Cylinders; First Aid Kits; Electrical Junction Boxes; Pallet of Fuses; Scaffolding Planks; and Much More!



THE AUCTION COMPANY

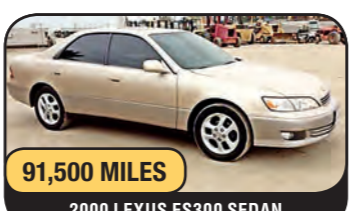
4461 Wade Ave., Perris, CA 92571 (951) 657-5300



< PARTIAL VIEW OF AUTOS PICKUPS, SUVS, & VANS

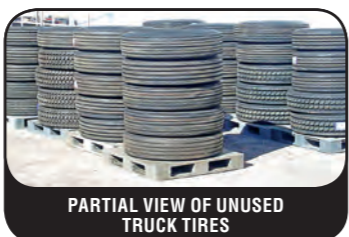
Presorted First Class Mail U.S. Postage PAID Eugene, Oregon Permit No. 17

**UNRESERVED PUBLIC AUCTION**



91,500 MILES

2006 LEXUS ES300 SEDAN



PARTIAL VIEW OF UNUSED TRUCK TIRES



1,373 HOURS

2009 GENIE S125 BOOMLIFT



28,791 MILES

(1 OF 2) 2007 FREIGHTLINER M2 2,000 GALLON WATER TRUCKS

QS-0024359



EQUIPMENT FROM: Sunbelt Rentals, State of California, Southern California Contractors, Rental Companies, Mining Companies & Others



< HITACHI EX200LC-5 HYDRAULIC EXCAVATOR



1,954 HOURS

2006 MANITOU M40-4-T2 FORKLIFT



2004 CASE 580SM LOADER BACKHOE



438 MILES

(1 OF 2) 2011 BOBCAT CT122B UTILITY TRACTOR



1970 ROHR INDUSTRIES 65' PATROL VESSEL (ONLINE ONLY)



PARTIAL VIEW OF OVER 20 LIGHT TOWERS

**ONLINE ONLY**

Auctions Start Ending December 16th



(1 OF 2) 2004 JLG 600S BOOMLIFTS



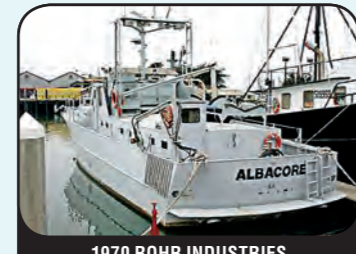
2006 JOHN DEERE 317 SKIDSTEER LOADER



(1 OF 2) 06-05 GENIE 3384RT ROUGH TERRAIN SCISSORLIFTS



(1 OF 5) 07-06 UPRIGHT TM12 SCISSORLIFTS



1970 ROHR INDUSTRIES 65' PATROL VESSEL



LEKTRIEVER ELECTRIC FILING SYSTEMS

(2) 2004 JLG 600S BOOMLIFTS  
2006 JOHN DEERE 317 SKIDSTEER LOADER  
2006 GENIE 3384RT ROUGH TERRAIN SCISSORLIFT

2005 GENIE 3384RT ROUGH TERRAIN SCISSORLIFT  
2007 UPRIGHT TM12 SCISSORLIFT  
(4) 2006 UPRIGHT TM12 SCISSORLIFTS

2006 KAWASAKI 3010 UTILITY CART  
1970 ROHR INDUSTRIES 65' PATROL VESSEL  
LEKTRIEVER ELECTRIC FILING SYSTEMS

These items will be sold online only. Please visit www.theauctioncompany.net to bid.

**SATURDAY, DECEMBER 13, 2014 AT 9:00 A.M.**

1450 Pennsylvania Ave., Colton, CA 92324

**UNRESERVED PUBLIC AUCTION**

SATURDAY, DECEMBER 13, 2014 AT 9:00 A.M.

1450 Pennsylvania Ave., Colton, CA 92324

EQUIPMENT FROM: Sunbelt Rentals, State of California, Southern California Contractors, Rental Companies, Mining Companies & Others



PARTIAL VIEW OF OVER 20 LATE MODEL BOOMLIFTS

Construction Equipment, Aerial Equipment, Trucks, Trailers, Autos, Truck Parts, Tools, Small Equipment & Much More



68,703 MILES

(1 OF 2) 2012 KENWORTH T440 ROLL-OFF TRUCKS



2,200 HOURS

2006 CASE 750K-LT SERIES 3 CRAWLER TRACTOR



58,737 MILES

2006 FREIGHTLINER BUSINESS CLASS M2 LUBE TRUCK

**INSPECTION & PRE-REGISTRATION:**

Friday, December 12, 9:00 A.M.-4:00 P.M. & Saturday, December 13, 7:30 A.M.-9:00 A.M.

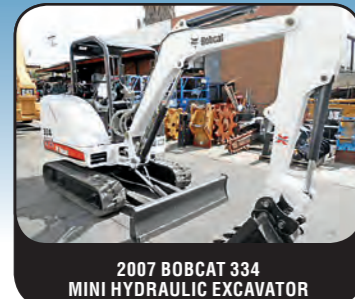


Corporate Office: 4461 Wade Avenue Perris, CA 92571 (951) 657-5300 • Fax (951) 657-5244 Website: www.theauctioncompany.net Email: customerservice@theauctioncompany.net

This auction will also be conducted on the Internet live and in real time. Check our website for more information.



HITACHI UH07LC-7 HYDRAULIC EXCAVATOR



2007 BOBCAT 334 MINI HYDRAULIC EXCAVATOR



2002 CATERPILLAR 446B LOADER BACKHOE



2004 JOHN DEERE 710G LOADER BACKHOE



1 OF 4

2009 GENIE Z60/34 BOOMLIFTS



1 OF 5

2008 GENIE Z45/34 BOOMLIFTS



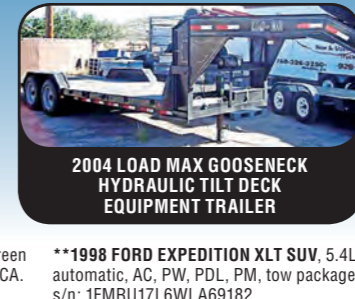
(1 OF 2) 2006 GENIE Z34/22 BOOMLIFTS



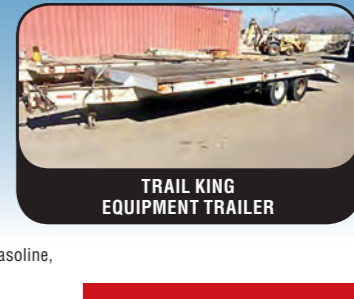
(1 OF 2) 2005 GENIE GS3268RT SCISSORLIFTS



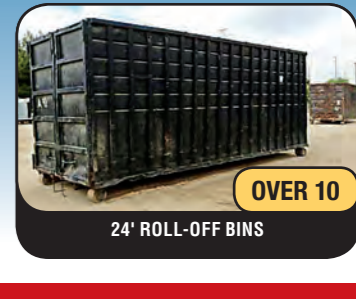
2003 STERLING LT9500 VACTOR TRUCK



2004 LOAD MAX GOOSENECK HYDRAULIC TILT DECK EQUIPMENT TRAILER



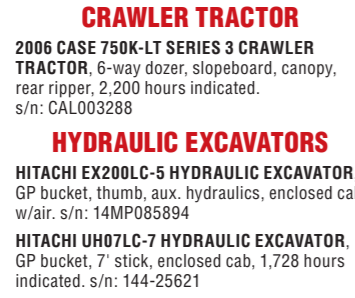
TRAIL KING EQUIPMENT TRAILER



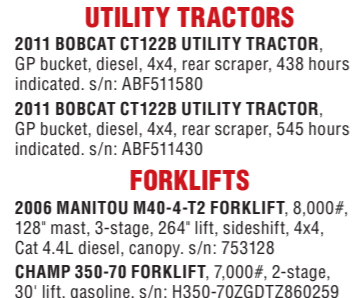
OVER 10 24' ROLL-OFF BINS



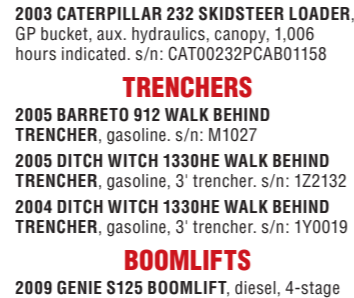
2002 CASE 580M LOADER BACKHOE



2007 BOBCAT 334 MINI HYDRAULIC EXCAVATOR



2003 SUMITOMO 03-FG60P2SVHDS FORKLIFT

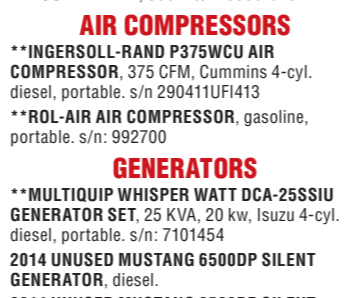


2009 GENIE S125 BOOMLIFT



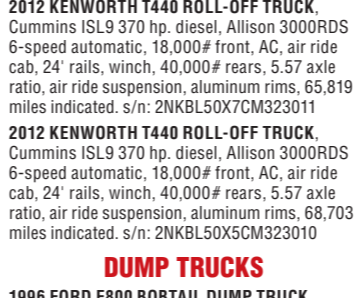
1 OF 4

2006 GENIE 3384RT ROUGH TERRAIN SCISSORLIFT



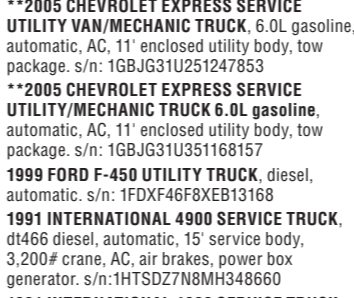
1 OF 5

2008 GENIE GS2632 SCISSORLIFT



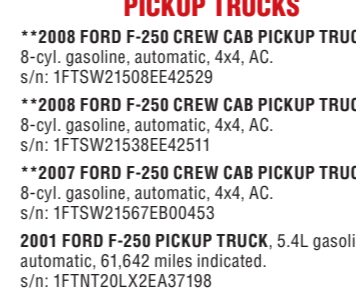
1 OF 2

2007 FREIGHTLINER BUSINESS CLASS M2 2,000 GALLON BOBTAIL WATER TRUCK



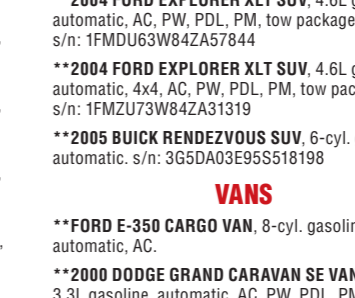
1 OF 2

2005 CHEVROLET EXPRESS SERVICE UTILITY VAN



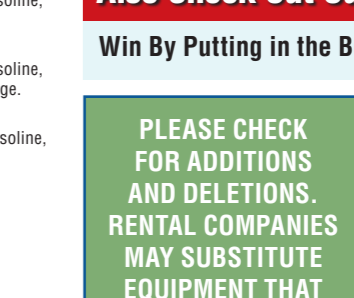
1 OF 2

2008 FORD F-250 CREW CAB PICKUP TRUCK



1 OF 2

2008 FORD EXPLORER XLT SUV



1 OF 2

2005 BUICK RENDEZVOUS SUV



1 OF 2

2004 DODGE GRAND CARAVAN SE VAN

Also Check Out Our Private Sales Auctions!

Win By Putting in the Best Offer or Simply BUY IT NOW!

**PLEASE CHECK FOR ADDITIONS AND DELETIONS. RENTAL COMPANIES MAY SUBSTITUTE EQUIPMENT THAT IS ON RENT.**

**SUNBELT RENTALS**  
**SUNBELT EXTENDED WARRANTY PROGRAM**  
 Select Sunbelt Rentals machines in the auction sale will have Sunbelt extended warranties available for purchase. The Sunbelt Extended Warranty Program shows that Sunbelt Rentals stands behind their equipment. Please check with TAC staff for more information.

www.theauctioncompany.net

**DIRECTIONS**  
**From Los Angeles or Ontario:** Take Interstate 10 East to Rancho Avenue Exit, turn left (north). Go approximately 1.1 miles to Citrus Street (at the stop light), turn right. Take Citrus Street to Pennsylvania Avenue, turn right at Pennsylvania Avenue. Auction site is on the left at 1450 Pennsylvania Avenue.  
**From Orange County:** Take Interstate 91 East to Interstate 215 North (I-91 turns into I-215 North) to Interstate 10 West. Exit at Rancho Avenue Exit, turn right (north). Go approximately 1.1 miles to Citrus Street (at the stop light) turn right. Take Citrus Street to Pennsylvania Avenue, turn right at Pennsylvania Avenue. Auction site is on the left at 1450 Pennsylvania Avenue.  
**From San Diego:** Take Interstate 15 North to Interstate 215 North to Interstate 10 West. Exit at Rancho Avenue Exit, turn right (north). Go approximately 1.1 miles to Citrus Street (at the stop light) turn right. Take Citrus Street to Pennsylvania Avenue, turn right at Pennsylvania Avenue. Auction site is on the left at 1450 Pennsylvania Avenue.

**AIRPORTS**  
**Ontario International Airport:** Serviced by Alaska Airlines, America West, American, Southwest, US Air, and United Airlines.  
**FINANCING**  
 Riverbend Financial Contact Doug at..... (541) 312-2160  
**LOCAL HOTELS/MOTELS**  
 Hilton San Bernardino..... (909) 889-0133  
 285 East Hospitality Lane, San Bernardino  
 Hampton Inn and Suites Colton/San Bernardino..... (909) 370-2424  
 250 North 9th Street, Colton  
 Holiday Inn..... (909) 788-9900  
 2830 Iowa Avenue, Colton

**RENTAL CARS**  
 Enterprise..... (800) 325-8007  
 Hertz..... (800) 654-3131  
 Avis..... (800) 331-1212  
**EQUIPMENT HAULING**  
 Lalo's Transport..... (626) 523-3678  
 Nationalwide: D. Gill Logistics..... (503) 638-0417  
**EQUIPMENT PAINTING/HAULING**  
 MRM Mobile Painting..... (909) 801-1549  
**CONTAINERIZING**  
 Lalo's Equipment..... (626) 523-3678  
 TAC will be conducting two (2) auction rings simultaneously part of the day. If you plan to bid at both auctions, please have a second bidder attend with you.

**AUCTION CALENDAR**

**SATURDAY, FEBRUARY 28, 2015**  
 Construction Equipment, Trucks, Trailers, Autos & More  
 Colton, California  
 951-657-5300

**FRIDAY & SATURDAY, MARCH 6 & 7, 2015**  
 Construction Equipment, Trucks, Gov't Fleet Vehicles & Asset Seizures  
 Vallejo, California  
 707-552-0739

**FIRST CAPITOL AND THE AUCTION COMPANY**  
 - A California Joint Venture Company -

PLEASE CHECK FOR ADDITIONS AND DELETIONS. RENTAL COMPANIES MAY SUBSTITUTE EQUIPMENT THAT IS ON RENT.

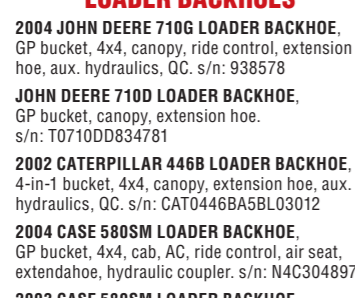


**TERMS:** All purchases must be paid for with cashier's check, bank wire transfer, certified check or bank guaranteed personal or company check. Cash will be accepted up to \$2,500, no exceptions. No cash will be accepted after December 15th. All personal or company checks must be accompanied by bank letter of guarantee. MasterCard and Visa will be accepted for deposit only, up to amount approved. A \$500 deposit or bank letter of guarantee is required to bid. A deposit of \$5,000 is required from all international buyers. A 25% deposit may be required at award of bid. All bidding will be in U.S. dollars and all instruments must be from U.S. banks. Full payment must be made by December 17th by 4:00 P.M. Persons intending to finance must have a verbal approval from Riverbend Financial or a letter of credit from their financier that guarantees payment will be made to TAC within three banking days after the auction. "All DMV items will be assessed a \$65 documentation fee and a \$58.20 smog fee if applicable. If buyer is "demanding title," buyer will receive title paperwork within 30 days of the auction, as long as all fees and necessary documentation has been provided from buyer. If TAC is transferring title for buyer, buyer will receive valid registration within 30 days of auction, as long as TAC has received all fees and necessary documentation from buyer. All equipment and vehicles are sold "AS IS, WHERE IS" ("where is" may not apply to out-of-state buyers). Although every effort has been made to present the descriptions in this brochure clearly and accurately, you must keep in mind that this brochure is a guide only, and TAC makes no guarantees or warranties, expressed or implied, of any kind whatsoever, including merchantability. Please see Buyer Registration Card for additional terms. TAC reserves the right to modify terms at any time prior to each sale. All equipment must be removed by Friday, December 19th, 2014.  
**NOTE:** A two and a half percent (2.5%) administrative fee will be added to all lots sold above \$2,500. A ten percent (10%) administrative fee will be added for all lots sold for \$2,500 or less. An item marked with two asterisks (\*\*) will be charged a ten percent (10%) administrative fee regardless of the selling price. Lots numbered 3000 and above will be charged a \$10 additional lot fee. If you are bidding online, an additional 3% fee will be charged.

**INSPECTION & PRE-REGISTRATION: Friday, Dec. 12, 9:00 A.M.-4:00 P.M. & Saturday, Dec. 13, 7:30 A.M.-9:00 A.M.**



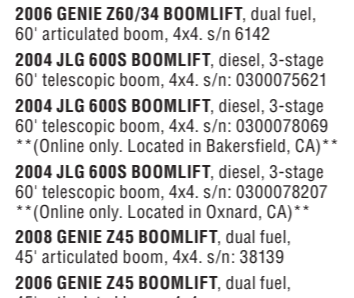
2009 BOBCAT S300 SKIDSTEER LOADER



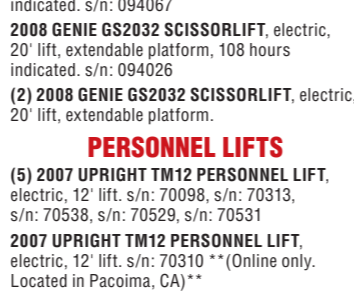
2004 JOHN DEERE 710G LOADER BACKHOE



2004 CASE 580S LOADER BACKHOE



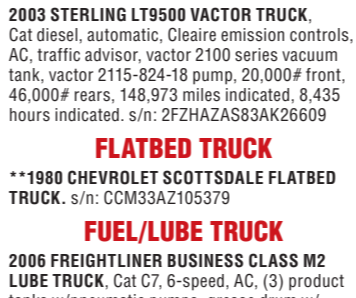
2003 CASE 580S LOADER BACKHOE



2004 JLG 600S BOOMLIFT



2006 GENIE Z45 BOOMLIFT



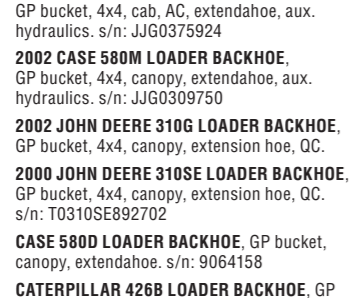
2006 GENIE Z45 BOOMLIFT



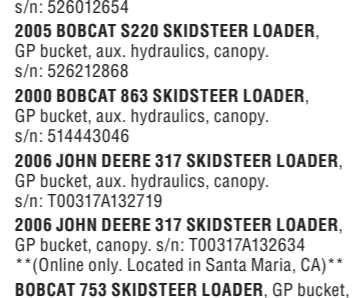
2006 GENIE Z45 BOOMLIFT



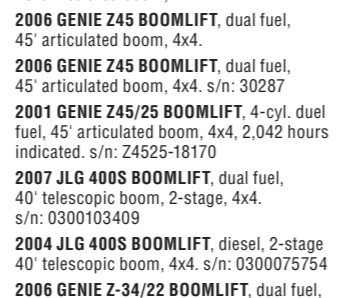
2005 BOBCAT S220 SKIDSTEER LOADER



2002 JOHN DEERE 310G LOADER BACKHOE



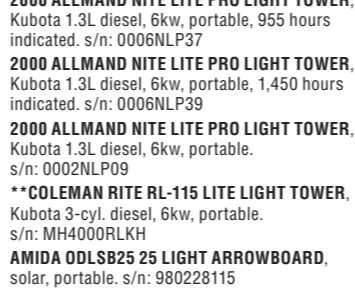
2006 JOHN DEERE 317 SKIDSTEER LOADER



2008 GENIE Z80/60 BOOMLIFT

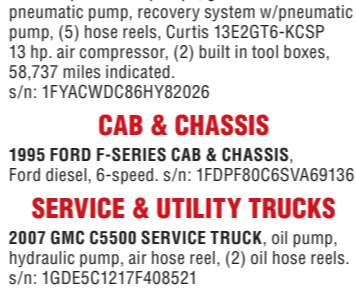


2008 GENIE S65 BOOMLIFTS



1 OF 7

2007 UPRIGHT TM12 PERSONNEL LIFTS



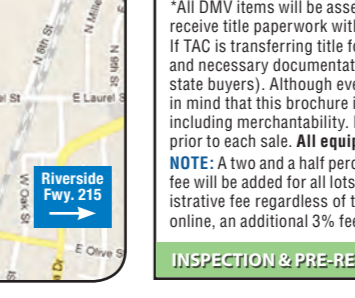
2008 GENIE S65 BOOMLIFTS



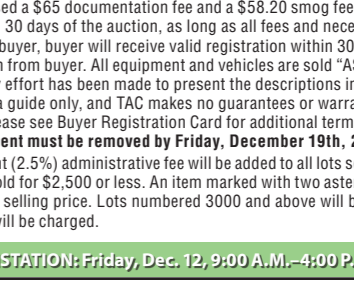
2008 GENIE S65 BOOMLIFTS



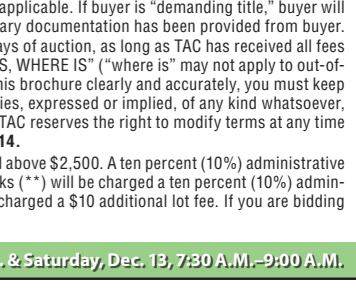
2005 DITCH WITCH 1330HE WALK-BEHIND TRENCHER



2005 DITCH WITCH 1330HE WALK-BEHIND TRENCHER



2005 DITCH WITCH 1330HE WALK-BEHIND TRENCHER



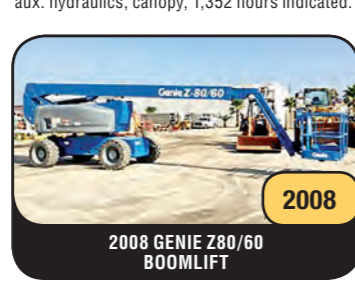
2005 DITCH WITCH 1330HE WALK-BEHIND TRENCHER



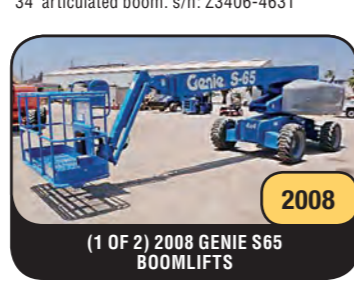
2006 JOHN DEERE 317 SKIDSTEER LOADER



PARTIAL VIEW OF INDUSTRIAL FORKLIFTS



2008 GENIE Z80/60 BOOMLIFT



(1 OF 2) 2008 GENIE S65 BOOMLIFTS



1 OF 7

2007 UPRIGHT TM12 PERSONNEL LIFTS



1 OF 11

2007 UPRIGHT TM12 PERSONNEL LIFTS



2005 DITCH WITCH 1330HE WALK-BEHIND TRENCHER



DOSKO 510SD CHIPPER