

AUCTION

LATE-MODEL CNC & MANUAL MACHINING & FABRICATING FACILITY INCLUDING:

CNC Vertical Machining Centers, CNC Boring Mill, CNC Lathe, Heavy Duty Manual Machine Tools, Fabricating & Welding Equipment, Huge Assortment of Tooling & Accessories, Large Quantity of Raw Materials & Much, Much More!

2007



< DOOSAN MDL MV6030 CNC VERTICAL MACHINING CENTER



> NOMURA 4" CNC HORIZONTAL BORING MILL

CNC

CNC

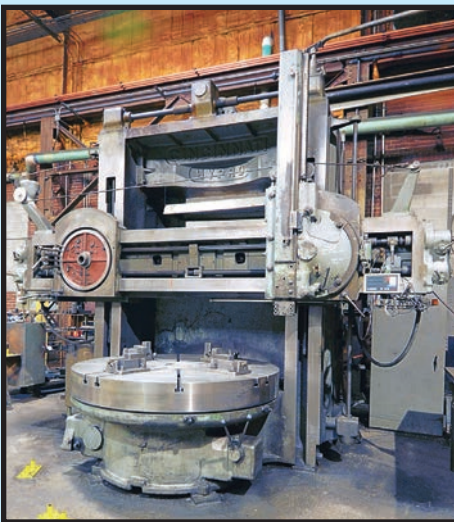
On the Premises of
LUNAR TOOL COMPANY
4600 Shaw Avenue
SAINT LOUIS, MISSOURI 63110
(See Directions on Back Page)

**AUCTION: THURSDAY, DECEMBER 11
10:00 A.M.**

INSPECTION: Wednesday, December 10
9:00 A.M. to 4:00 P.M. & Morning of Sale

BUYER'S PREMIUM: 15% ONSITE • 18% WEBCAST

**On-Site Bidding in Saint Louis, Missouri or Bid Via
Webcast at BidSpotter.com**



< CINCINNATI HYPRO 72" VERTICAL BORING MILL

Read
Partial Terms
and Conditions
on Back Page
of Brochure



CNC
DOOSAN PUMA 240C CNC LATHE

2006

Sale Conducted By:

PLANT & MACHINERY INC.
AUCTIONEERS • APPRAISERS • LIQUIDATORS • REAL ESTATE

HOUSTON • DALLAS • ST. LOUIS

Headquarters:
1304 Langham Creek Drive, Suite 454
Houston, Texas 77084

PHONE: (713) 691-4401

FAX: (713) 672-7905

**E-MAIL: pmi@pmi-auction.com
WEBSITE: www.pmi-auction.com**

2007



CNC

DOOSAN MDL. MV6030 CNC VERTICAL MACHINING CENTER



CNC

NOMURA 4" CNC HORIZONTAL BORING MILL

CNC VERTICAL MACHINING CENTERS

DOOSAN MDL. MV6030, new 2007, Fanuc Series 21i-MB CNC control, 29.5" x 63" tbl. size, 60" X-axis, 30" Y-axis, 24.6" Z-axis travels, CAT-40 spndl. taper, 8,000 RPM, chip conveyor, 40-pos. ATC, S/N MYNX750142.

(2) FADAL MDL. VMC4020HT, as new as 2002, cool power, 21-pos. ATC, 28" extended Z-axis, CAT-40 spndl. taper, high-speed CPU graphics, rigid tapping, S/N 012002074515 (2002) w/CNC multi-processor control, 10,000 RPM, S/N 9802377 (1998) w/CNC88HS CNC control and servo coolant.

CNC HORIZONTAL BORING MILL

NOMURA MDL. BN-100RD, new 1992, Fanuc OM CNC control, 6,600 lb. max. tbl. load cap., 55.11" X-axis, 39.37" Y-axis, 31-1/2" Z-axis, 19.7" W-axis, .001 deg. tbl. indexing, spds.: 5-1,250 RPM, 15 HP spndl. drive motor, built-in rotary tbl., CAT-50 taper spndl., 4" spndl. dia., 4" bar dia., 39-1/2" x 44" rotary tbl., coolant system, spndl. oil chiller, S/N 4873.

CNC ROTARY TABLE

HAAS MDL. HRT-310, 15± sec. accuracy, 12" dia. faceplate, 18" swing, H.D. and standard tailstocks, 1-1/2 HP servo drive, Haas servo control box, S/N 311295.

CNC LATHE

DOOSAN PUMA MDL. 240C, new 2006, Fanuc 21i-TB CNC control, 21.65" sw. over bed, 15.35" sw. over saddle, 13.77" turning dia., 21.65" turning length, 2.99" bar work dia., variable main spndl. spds. to 3,500 RPM, 15/18.5 kW main spndl. drive motor, 12-pos. vert. turret, 10" through hole hyd. chuck, tool presetter, parts catcher, hyd. tailstock, chip conveyor, S/N PM242384.

TABLE TYPE HORIZONTAL BORING MILLS

GIDDING & LEWIS NO. 45, 5" spndl., 40" x 84" tbl., 60" cross travel, 48" vert. travel, approx. 54" long. travel, 27" built-in facing head, spndl. spds.: 7-220 RPM, Newall 3-axis D.R.O.

CINCINNATI GILBERT, 3-1/2" spndl., 43" x 78-1/2" tbl., approx. 60" cross travel, 48" vert. travel, approx. 72" long. saddle travel, outboard suppt., Newall 3-axis D.R.O., spds.: 16.5-1,000 RPM, right angle attach. and extension.

CINCINNATI GILBERT, 3-1/2" spndl., 43" x 65-1/2" tbl., 48" cross travel, 46" vert. travel, approx. 48" long. travel, spds.: 16.5-1,000 RPM (*Note: this machine is currently disassembled and in need of repair).

INSPECTION: Wednesday, December 10, 9:00 A.M. to 4:00 P.M. & Morning of Sale



CNC

HAAS HRT-310 CNC ROTARY TABLE



CNC

2006

DOOSAN PUMA 240C CNC LATHE



2 AVAILABLE

AS NEW AS 2002

CNC

FADAL MDL. VMC4020-HT CNC VERTICAL MACHINING CENTER



2011

SUNNEN HTA-4100 HORIZONTAL HONING MACHINE

HORIZONTAL HONING MACHINE

SUNNEN MDL. HTA4100 HORIZONTAL, new 2011, 157" stroke, 2.5 to 21" I.D. dia. range, spndl. spds.: 20-300 RPM, 3 HP hone drive motor, servo stroking spds.: 5-90 FPM, 8,000 lb. max. tbl. cap. (2) honing drive mandrels, 20" hone head, 2-1/2" honing head, Siemens PLC control paper filter coolant system, S/N 4K1-1091.



CINCINNATI 28" X 144" HYDROTEL MILLING MACHINE



2011

CLOSE UP OF HONING HEAD AND CONTROLS



SELLERS 120" DOUBLE-COLUMN VERTICAL BORING MILL



CINCINNATI GILBERT 3-1/2" HORIZONTAL BORING MILL

VERTICAL BORING MILLS

SELLERS, 120" tbl., approx. 149" swing, approx. 105"H. under rail, R.H. swivel ram w/36" travel, L.H. saddle (no ram), (4) tbl. top jaws, variable spd. tbl. drive, 30 HP DC drive motor.

CINCINNATI HYPRO, 72" tbl., approx. 76" swing, approx. 64" ht. under cross rail, 36" ram stroke, R.H. turning ram, spds.: 4.4-156 RPM, Newall 2-axis D.R.O., pendant control, L.H. ram (currently disassembled), (4) tbl. top jaws, variable frequency drive unit, S/N 6065. **See Cover Photo.**

BORING MILL ACCESSORIES

ANGLE PLATES: (1) PAIR, 24"W. x 44-1/2"H. x 29"D.; **(1) PAIR**, 6"W. x 36"H. x 12"D.; **(1) PAIR**, 6"W. x 80"H. x 42"D.; **(2) T-SLOTTED**, 30"W. x 54"H. x 27"D.; **T-SLOTTED**, 30"W. x 30"H. x 15"D.; **T-SLOTTED**, 48"W. x 49"H. x 25"D.

OHIO 48" ROUND H.D. POWERED ROTARY TBL.; PRATT & WHITNEY 24" ROTARY TBL.

VERTICAL HYDROTEL MILLING MACHINES

CINCINNATI HYDROTEL, 28" x 144" tbl., 360 deg. tracer, Newall 2-axis D.R.O., 10"H. x 23"W. x 119"L. T-slotted riser plate, spds.: 52-1,300 RPM, No. 50 NST spndl. taper, S/N 1H1B1M-53.

CINCINNATI HYDROTEL, 28" x 96" tbl., hand controls, 360 deg. tracer unit, Newall 2-axis D.R.O., spds.: 30-750 RPM, No. 50 NST spndl. taper, 8-1/4"H. x 29"W. x 70-1/2"L. riser tbl., S/N 1H1V1M-58.



PARTIAL VIEW OF ANGLE PLATES

VERTICAL TURRET MILLS

BRIDGEPORT SERIES 2 SPECIAL, 11" x 58" tbl., 2 HP spndl. drive motor, 5" quill stroke, long. pwr. feed, S/N 2372S.

BRIDGEPORT SERIES 1, 9" x 42" tbl., 2 HP motor, long. pwr. feed, 2-axis D.R.O., S/N 199413.

(2) BRIDGEPORT MDL. J, 9" x 48" tbl., Newall 2-axis D.R.O., pwr. feed.

LAGUN MDL. FTV1, 9" x 42" tbl., long. pwr. feed, variable spndl. head, 2-axis D.R.O.

BRIDGEPORT MDL. 2J, Series 1, 9" x 36" tbl., shaping attach.

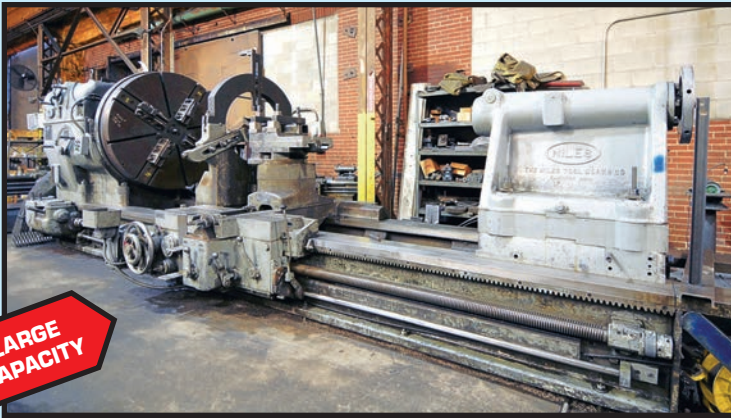


PARTIAL VIEW OF VERTICAL TURRET MILLS

On the Premises of
LUNAR TOOL COMPANY
4600 Shaw Avenue
SAINT LOUIS, MISSOURI 63110

(See Directions on Back Page)

AUCTION: THURSDAY, DECEMBER 11 • 10:00 A.M.



**LARGE
CAPACITY**

NILES 76" X 216" ENGINE LATHE



**LARGE
CAPACITY**

MAUSER 48" X 21' GAP BED ENGINE LATHE



**On-Site Bidding in Saint Louis,
Missouri or Bid Via Webcast at
BidSpotter.com**

ENGINE LATHES

NILES 76" X 216", approx. 60" sw. over crossslide, 2-1/4" spndl. hole, spds.: 1.89–61.1 RPM, 40 HP motor, roller jaw steadyrest, faceplate drive, 60" dia. faceplate w/(4) jaw, full length lead screw w/quick change gear box, pwr. rapid traverse, S/N N.A.

MEUSER 48" X 21' GAP BED, 64" sw. in gap, approx. 36" sw. over crossslide, taper attach., steadyrest, 4-1/2" spndl. hole, spds.: 8–400 RPM, inch/metric thdng., 47-1/4" dia. 4-jaw chuck, S/N 20775.

MAZAK 34" X 132" "REX" GAP BED, approx. 44" sw. in gap, 4.15" spndl. hole, spds.: 12–1,200 RPM, inch/metric thdng., roller steadyrest, 24" dia. 4-jaw chuck, Newall 2-axis D.R.O., 4-way rapid traverse, crossslide mtd. long boring attach., S/N 23752W.

MONARCH 30-1/2" X 180", 2-1/4" spndl. hole, spds.: 6–303 RPM, (2) roller jaw steadyrests, S/N 18820.

CINCINNATI 19" X 48" HYDRO-SHIFT, 1-7/8" spndl. hole, spds.: 25–980 RPM, roller steadyrest.

MAZAK 18" X 80" GAP BED, approx. 10" sw. over crossslide, 1.9" spndl. hole, spds.: 25–1,500 RPM, inch/metric thdng., 12" dia. 4-jaw chuck, Newall 2-axis D.R.O., roller jaw steadyrest, S/N 25551W.

SIDNEY 17" X 84", spds.: 25–1,000 RPM, 1-1/2" spndl. hole, taper attach., 10" dia. 4-jaw chuck, fellowrest, S/N 10096, Lot No. 140.

MORI SEIKI 17" X 40" GAP BED, Mdl. MS1050G, approx. 10" sw. over crossslide, spds.: 32–1,300 RPM, inch/metric thdng., 2-1/4" spndl. hole, 12" dia. 4-jaw chuck, S/N 3077.

LEBLOND 16" X 32", 1-7/8" spndl. hole, spds.: 20–425 RPM, collet nose w/lever collet closer.

KEYSEATERS

DAVIS MDL. 15, auto. feed, 2 HP drive, overarm suppt., 20" x 31" fixture tbl., S/N 15-85.

MITTS & MERRILL NO. 3 MECHANICAL, w/accessories, S/N E20585.

GRINDERS

BLANCHARD #18-36 VERTICAL ROTARY SURFACE GRINDER, 12" max. ht. under wheel, 18" segmented wheel, 36" electromagnetic chuck and controls, 40 HP drive motor, coolant base, S/N 5035.

KBC MDL. LF1200G UNIVERSAL CYLINDRICAL GRINDER, 12" x 48" cap., swing-down internal grinding attach., swivel workhead, coolant system, S/N 05025.

BOOM ENTERPRISES MDL. BM450A TOOL AND CUTTER, tilt spndl., 4-1/2" x 27" tbl., fabricated stand, S/N 1272.

CINCINNATI NO. 2 TOOL AND CUTTER, motorized universal work head, S/N 1D2T1Y-128.

STERLING DRILL GRINDER, 1/4" to 2-1/2" drilled dia., universal fixture, S/N DG6153.

ABRASIVE NO. 3B SURFACE GRINDER 8" x 20" CAP., electromagnetic chucking controls.

BROWN & SHARPE NO. 2 SURFACE GRINDER, 6" x 18" cap.



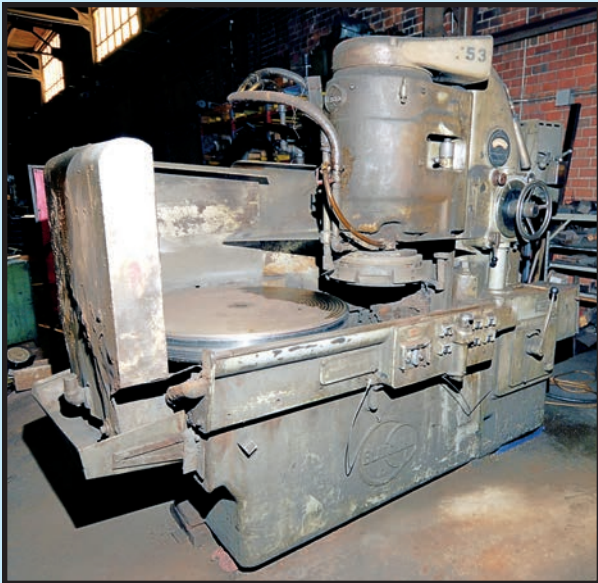
MAZAK 18" X 80" GAP BED ENGINE LATHE



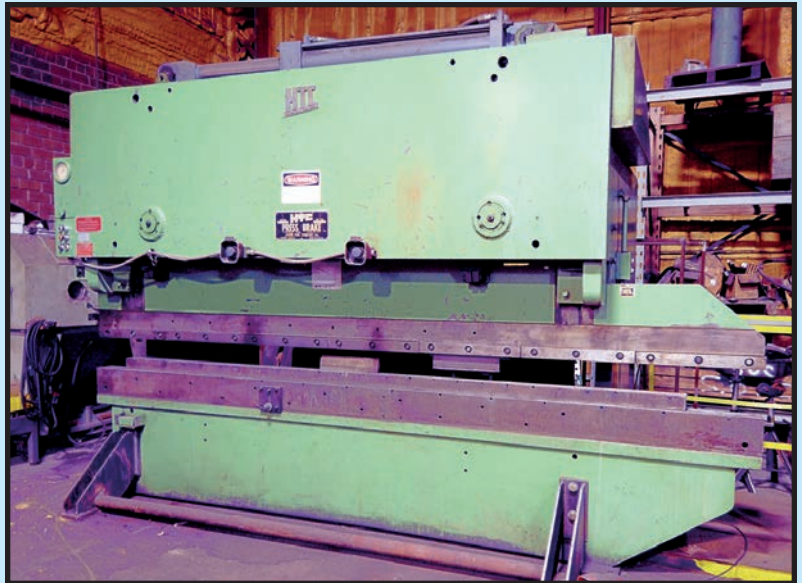
MAZAK 34" X 132" GAP BED ENGINE LATHE



MONARCH 30" X 180" ENGINE LATHE



BLANCHARD 18-36 VERT. ROTARY SURFACE GRINDER



HTC 150-T X 14' HYDRAULIC PRESS BRAKE

HYDRAULIC PRESSBRAKE

HTC 150 T. CAP. X 14' MDL. 150G, 14' overall length of bed and ram, 10'6" dist. btwn. housings, R.H. 24" horn, pwr. backgauge, S/N 473675.

HORIZONTAL BANDSAWS

HYD-MECH MDL. S23A AUTOMATIC, new 2007, 16" x 18" rect. cap., 16" rd. cap. (@ 90 deg.), 16" x 10" rect. cap., 12" rd. cap. (@ 45 deg.), blade spds.: 75-350 SFM, 5 HP blade drive, 0 to 29" signal shuttle stroke, PLC controlled, Mitsubishi PLC100 variable vice pressure, full capacity bundling, auto. feed, swivel miter head, electronic programmable feed system, 1/4" blade, hyd. bundle cutting unit, 12' infeed roller conveyor, S/N XA0307459FD.

W.F. WELLS MDL. F15, 15" rd. cap., 15" x 17" rect. cap., 1" blade, 75-300 FPM, 3 HP blade drive motor, hyd. clamping, S/N 801458.

WELLSAW MDL. 1016, 10" x 16" rect. cap., 2 HP drive motor, 1" blade, coolant base, 6' infeed roller conveyor, S/N 2632.

VERTICAL BANDSAWS

DOALL MDL. ZW-3620 ZEPHER, 36" throat depth, 30" x 36" tilt tbl., 16" max. cutting height, S/N 266-71158.

DOALL 16", blade welder.

MISCELLANEOUS MACHINERY

HARDINGE MDL. DSM59 SECOND OPERATION LATHE, cabinet base, lever type boring head, S/N N.A.

SUNNEN MDL. MA HONING MACHINE, spds.: 250-820 RPM, assorted mandrels and oil base, S/N 6490.

WALKER TURNER 20" DRILL PRESS, belt driven, adj. height tbl., No. 2 MT spndl., S/N 52EP1A.

UNITEK TAP DISINTEGRATOR, cabinet base.

CINCINNATI 20" PLAIN MECHANICAL SHAPER, spds.: 11-138 SPM, S/N N.A.

BALDOR CARBIDE GRINDER, 1/2 HP motor, tilting tbls.

H-FRAME SHOP PRESS, heavy fabricated construction, adj. height tbl., 48" dist. btwn. uprights, Enerpac hyd. ram, approx. 75 T. cap.

FAMCO MDL. 3-1/2R RATCHET STYLE ARBOR PRESS, on cast iron stand.

DELTA SHOPMASTER 6" BENCH GRINDER.

POWERMATIC MDL. 33B BELT SANDER, tilting tbl., S/N 8233077.

TRINCO MDL. 48 X 48/BP2 CABINET BLAST MACHINE, 48" x 48" cabinet, S/N 16486-0.

DELTA COMBINATION BELT AND DISC SANDER, 6" belt, 12" disc, tilt tbls.

DAKE MDL. 2-1/2 RATCHET STYLE ARBOR PRESS, S/N N.A.

DAYTON MDL. 4Z328E ARBOR PRESS, 1 T. cap.



KBC UNIVERSAL CYLINDRICAL GRINDER



**DAVIS MDL. 15A
AUTOMATIC KEYSEATER**



**HYD-MECH MDL. S23A
AUTOMATIC HORIZONTAL BANDSAW**

2007

On the Premises of

LUNAR TOOL COMPANY
4600 Shaw Ave., SAINT LOUIS, MO 63110

(See Directions on Back Page)

INSPECTION: Wednesday, December 10, 9:00 A.M. to 4:00 P.M.
& Morning of Sale



**AS NEW AS
2011**

VIEW OF WELDING MACHINES

PRECISION INSTRUMENTS

PRECISION INSTRUMENTS

100'S OF LOTS OF SHOP SUPPORT EQUIPMENT!



**On-Site Bidding in Saint Louis,
Missouri or Bid Via Webcast at
BidSpotter.com**

AUCTION: THURSDAY, DECEMBER 11 • 10:00 A.M.

INSPECTION: Wednesday,
December 10, 9:00 A.M. to 4:00 P.M.
& Morning of Sale

WELDING MACHINES

- MILLER DELTAWELD MDL. 652 MIG WELDER**, 650 amps @ 44 v., 100% duty cycle, 70 Series variable spd. wire feeder, running gear, mig torch, S/N MB170699U.
- THERMALARC MDL. 600GMS DC INVERTER TYPE ARC WELDER**, 600 amp, wire feed.
- MILLER SYNCROWAVE MDL. 351 TIG WELDER**, 350 amps @ 34 v., 40% duty cycle, S/N KG229621.
- MILLER MDL. XMT350 INVERTER TYPE MIG WELDER**, 350 amps @ 34 v., 60% duty cycle, Miller 22A wire feeder, portable cart, S/N LF045172.
- THERMALARC MDL. 300GTSDC INVERTER TYPE ARC WELDER**, 300 amps @ 36 v. 60% duty cycle, S/N N.A..
- MILLER SYNCROWAVE MDL. 250 TIG WELDER**, 250 amps @ 30 v., 40% duty cycle, chiller, foot pedal control, tig torch, S/N KB095579.

MISCELLANEOUS WELDING ACCESSORIES

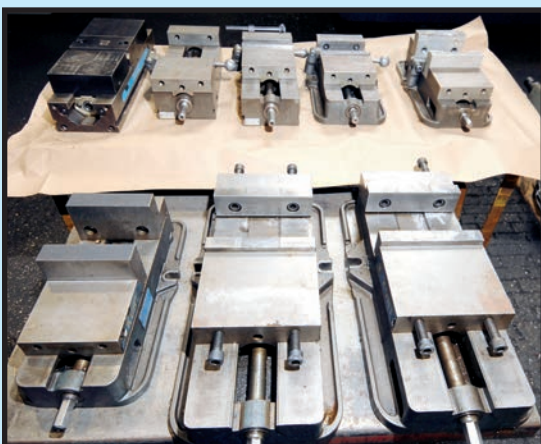
GO-FER MDL. III TRACK TORCH, oxy./acy. head, approx. 12' of travel track; **OXY./ACY. TORCH CARTS** w/regulators; **(1) SET IDLER ROLLS**, adj. center, on heavy fabricated stand; **CUTTING TORCH**; **(3) ACE WELD FUME EXTRACTORS**; **PHOENIX DRY ROD TYPE 300 ELECTRODE STABILIZING OVEN** w/assorted welding rods; **WELD SHIELDS**; **WIDE ASSORTMENT OF H.D. FABRICATED STEEL WELDING TBLS AND WORKBENCHES.**

MISCELLANEOUS FABRICATING MACHINERY

- HOUSFELD MDL. 2 UNIVERSAL BAR BENDER**, on fabricated stand.
- WHITNEY 100 T. CAP. C-FRAME HYDRAULIC PUNCH**, 10" throat.
- OSTER PIPE AND BOLT THREADER**, 1/4" to 2-1/4" w/stand.

MACHINE SHOP TOOLING & ACCESSORIES

LARGE QTY. OF CAT-50 AND CAT-40 TAPER TOOLHOLDERS including stackable boring bar units; **HUGE ASSORTMENT OF NO. 50 AND NO. 6MT SPINDLE TOOLING** for horiz. boring mills; **QUICK CHANGE TOOLHOLDERS**; **WIDE ARRAY SET-UP BLOCKS**; **PRECISION PARALLELS AND CLAMPING EQUIPMENT**; **BRIDGEPORT 16" ROTARY TBL.**; **H.D. V BLOCKS** of various sizes up to 12"; **INDEXABLE CARBIDE FACEMILLS**; **MORSE TAPER ADAPTER SLEEVES**; **KEYWAY BROACHES AND BUSHINGS**; **WIDE ASSORTMENT OF HONING STONES AND EQUIPMENT**; **(2) KURT 8" ANGLE LOCK MILLING VISES**; **(7) KURT 6" ANGLE LOCK MILLING VISES**; **(2) KURT ANGLE LOCK MDL. II 6" MILLING VISES**; **H.D. BENCH VISES**; **FORGED TOE CLAMPS**; **WIDE ARRAY OF 3-JAW AND 4-JAW CHUCKS** of all mounts; **H.D. LIVE CENTERS** up to 6" bullnose; **ALORIS QUICK CHANGE TOOLPOSTS**; **BRIDGEPORT MILLING VISE**; **TOOLEX MDL. RWS DOUBLE GRIP VISE**; **19-1/2" DIA. 3-JAW SCROLL CHUCK** w/7-7/8" center hole; **28" DIA. 3-JAW SCROLL CHUCK** w/13" center hole; **SPIN INDEXERS**; **L&W 10" INDEXER** w/3-jaw chuck; **LARGE QTY. HONING EQUIPMENT.**



VIEW OF KURT ANGLE LOK VISES

PARTIAL VIEW OF CAT-50 SPINDLE TOOLING

CAT-40 SPINDLE TOOLING



LARGE MICROMETERS



ALUMINUM RAW MATERIALS



ALLIS CHALMERS 6,000 LB. LPG FORKLIFT

DON'T MISS THIS SALE!

PRECISION INSTRUMENTS

SELECTION OF INTERCHANGABLE ANVIL LARGE DIA. MICROMETERS IN CASES, 18" DIAL TYPE HEIGHT GAUGES; MITUTOYO 24" DIAL TYPE HEIGHT GAUGE; FUGI 6" X 18" TILTING SIGN MAGNETIC CHUCK; BROWN & SHARPE 6" X 12" DBL. MAGNETIC SIGN PLATE; (3) WILSON MDL. 4TTBB ROCKWELL HARDNESS TESTERS w/accessories; CADILLAC MITUTOYO HEIGHTMASTER; GO/NO GO GAUGES; SCREW THREAD MICROMETERS; STANDARD MICROMETERS from 2" to 24" cap.; MITUTOYO 3" TO 4" DIGITAL MICROMETER; STARRETT PRECISION MACHINE LEVEL; DELTRONIX MDL. 330A-DEL OPTICAL COMPARATOR, digital control, S/N S180508.

CUTTING TOOLS

HUGE ASSORTMENT OF CUTTING TOOLS, INCLUDING: 2-FLUTE AND 4-FLUTE ENDMILLS up to 3" dia.; ROUGHING ENDMILLS; CORNER RADIUS ENDMILLS; BALLNOSE ENDMILLS; SHELL MILLS; TAPER SHANK DRILLS up to 3-1/2" dia.; INDEXABLE CARBIDE TURNING TOOLS; INDEXABLE CARBIDE BORING BARS; CARBIDE INSERTS (NEW); NATIONAL FINE AND CORSE TAPS up to 6" cap.; TAPS AND DIES of all descriptions; REAMERS.

SURFACE PLATES

36"W. X 60"L. CAST IRON, scraped surface, heavy fabricated stand; 18" X 24" X 3" THK. DBL. LEDGE GRADE B 48" X 96" X 10" THK., on heavy fabricated steel stand; 36" X 48" X 6" THK. DBL. LEDGE, on heavy fabricated steel stand; 36" X 72" X 6" THK., on heavy fabricated steel stand; TRUESTONE 48" X 72" DBL. LEDGE GRADE A, on heavy fabricated steel stand, S/N 6457.

RAW MATERIALS

HUGE ASSORTMENT OF RAW MATERIALS, INCLUDING: 1018, 1030 AND OTHER COLD ROLLED STEEL MATERIALS; ROUNDS up to 8" dia.; SQUARE BARS up to 4 x 4; HEAVY WALL STRUCTURAL TUBING; C CHANNEL; SEVERAL HARDENED AND GROUND BARS up to 3" dia. x 20'L.; ANGLE ROUND PIPE AND TUBE; HEX BAR; COLD ROLLED SHAPES of all sizes; ASSORTED PLATE; STAINLESS STEEL BARS AND TUBES, WIDE ARRAY OF ALUMINUM SHAPES, PLATES AND TUBING, FABRICATED STEEL CANTILEVER STORAGE RACKS.

FORKLIFT

ALLIS CHALMERS 6,000 LB. CAP., Mdl. ACP60KC-PS-SNGL, LPG engine, 130" lift ht., 48" forks, large dia. front cushion tires, load grate, S/N BKK136989.

MATERIAL HANDLING EQUIPMENT

WIDE ARRAY OF HEAVY LIFTING CHAINS up to 3/8"L.; PLATE CLAMPS; NYLON LIFTING STRAPS; HYDRAULIC PALLET JACKS; 1/2, 3/4 AND 1 CU. YD. SELF-DUMPING HOPPERS; LARGE QTY. OF FORGED C-CLAMPS; 129"L. CRANE SPREADER BAR w/floor stand; ELECTRIC CHAIN HOISTS; LADDERS; LOCKERS; FIREPROOF CABINETS; BOLT BINS w/assorted fasteners; SEVERAL 36" AND 30" FLOOR CIRCULATOR FANS; ASSORTED PEDESTAL FANS; STEP LADDERS.

POWER & HAND TOOLS

BELT SANDERS; CIRCULAR SAWS; 1" PNEUMATIC IMPACT WRENCH; RECIPROCATING SAW; 1" H.D. ELECTRIC DRILL; (2) MILWAUKEE MAGNETIC BASE DRILLS; HOUGEN HOLLMATIC MAGNETIC BASE DRILL; RIDGID 3/4" H.D. DRILL; HILTI FASTENER GUN; HILTI HAMMER DRILL w/accessories; BX ELECTRIC SCRAPING MACHINE; ASSORTED LARGE CAPACITY HYDRAULIC CYLINDERS AND PUMPS; SOCKETS; RATCHETS; IMPACT SOCKETS up to 1" drive; EXTENSIONS; HUGE ASSORTMENT OF HAND TOOLS, INCLUDING: (50+) PROTO STRIKE WRENCHES, up to 3-7/8" dia. down to 1"; HUGE ASSORTMENT OF EYEBOLTS of all sizes; SHACKLES; SUPPORT SPIEDERS for thin wall tubing.

On the Premises of
LUNAR TOOL COMPANY
 4600 Shaw Avenue
 SAINT LOUIS, MISSOURI 63110
(See Directions on Back Page)



VIEW OF DRILL BITS



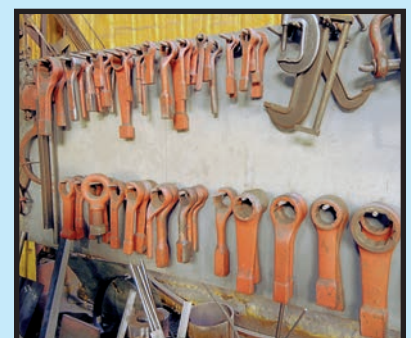
VIEW OF SOCKETS



VIEW OF C CLAMPS



VIEW OF MAG BASED DRILLS, ETC.



VIEW OF STRIKE WRENCHES

PLANT & MACHINERY INC.

AUCTIONEERS • APPRAISERS • LIQUIDATORS • REAL ESTATE

P.O. Box 19100
Houston, TX 77224-9100

DATED MATERIAL - PLEASE DELIVER



PUBLIC INVITED
AUCTION: THURSDAY, DEC. 11 • 10:00 A.M.



Presorted
First Class Mail
U.S. Postage
PAID
Eugene, Oregon
Permit No. 17

**ATTENTION: PLANT MANAGER
OR EQUIPMENT BUYER**

LATE-MODEL CNC & MANUAL MACHINING & FABRICATING FACILITY INCLUDING:

**CNC Vertical Machining Centers, CNC Boring
Mill, CNC Lathe, Heavy Duty Manual Machine
Tools, Fabricating & Welding Equipment,
Huge Assortment of Tooling & Accessories,
Large Quantity of Raw Materials & Much,
Much More!**



DIRECTIONS

FROM ST. LOUIS INTERNATIONAL AIRPORT: Take I-70 E to N. Kings Hwy. South. Drive approx. 4 miles to McRee Avenue. Turn left, approx. 1/2 mile to S. Vandventer Avenue, turn right. Turn right on Shaw Blvd. The auction site will be before Kings Hwy., watch for auction signs.

LODGING

HOLIDAY INN ST LOUIS (314) 645-0700
5915 Wilson Avenue, St. Louis, Missouri 63110

DRURY INN & SUITES FOREST PARK (314) 646-0770
2111 Sulphur Avenue, St. Louis, Missouri 63139

UNABLE TO ATTEND?

Bid on-line in real time at **BidSpotter.com**
TO PARTICIPATE YOU MUST:

1. Register at www.BidSpotter.com. **DO IT NOW.**
2. Either wire transfer, or mail a cashier's check deposit in the amount of **\$3,000 (U.S. Bidders)** or **\$10,000 (Foreign Bidders)** to: **Plant & Machinery, Inc. P.O. Box 19100, Houston, TX 77224-9100**
If you are using FedEx or another delivery service:
1304 Langham Creek Drive, Suite 454,
Houston, TX 77084, (713) 691-4401

You must be registered and have your deposit in the hands of Plant & Machinery, Inc. at least 24 hours prior to the start of the auction. Failure to register and/or failure to send your deposit to Plant & Machinery, Inc. may disqualify you from bidding. **DON'T WAIT.**

If you need assistance, don't hesitate to call (713) 691-4401.
ALL WEBCAST BIDS ARE SUBJECT TO AN 18% BUYER'S PREMIUM.

FINANCE YOUR AUCTION PURCHASE

Conserve Your Cash &
Increase Your Bidding Power

**AuctionLea\$e Provides
M&E Financing**

**With Approvals from
\$5,000 to \$999,000**

(800) 438-1470

Apply Online:
www.AuctionLease.com

PARTIAL TERMS & CONDITIONS

A 15% Buyer's Premium Will Apply On-site.

An 18% Buyer's Premium Will Apply to Webcast Bids. See Above Rules for Participation.

Everything will be sold to the highest bidder or bidders for cash in accordance with the auctioneer's Customary Terms of Sale, copies of which will be posted on the premises.

ALL PAYMENTS MUST BE MADE BY CASH, CASHIER'S CHECK, WIRE TRANSFER OR COMPANY CHECK WITH BANK LETTER GUARANTEEING PAYMENT TO PLANT & MACHINERY INC.

Here is an example of what your letter should be: *Mr. "Customer Name" is a customer of this bank. This bank will guarantee unqualified payment to PMI on the account listed herein up to the amount of \$_____. This letter is good until January 12, 2015.*

In default of payment of bills in full within the time therein specified, the Auctioneer in addition to all other remedies allowed by law, may retain all monies received as deposit or otherwise, as liquidated damages. All items must be removed by the time announced at the start of the sale.

Lots not paid for and/or removed within the time allowed may be resold at public or private sale without further notice, and any deficiency, together with all expenses and charge of resale, will be charged to the defaulting purchaser.

The buyer acknowledges that he or an agent has inspected all of the assets upon which he will be bidding and/or does purchase.

Buyer agrees to accept assets purchased "AS IS," WITH "ALL FAULTS" AND "WITH REMOVAL AT BUYER'S RISK AND EXPENSE." THE AUCTIONEER EXPRESSLY DISCLAIMS ON THE PART

OF THE AUCTIONEER AS AGENT AND THE SELLER, ANY WARRANTY AS TO FITNESS OR USABILITY OF ALL THE ASSETS, AND THE BUYER EXPRESSLY WAIVES ANY CLAIM IN RESPECT TO ANY POSSIBLE FUTURE USE OF ANY ASSET PURCHASED FOR ANY PURPOSE WHATSOEVER.

The buyer does hereby assume and does agree to indemnify and hold the auctioneer harmless from any future claim which shall pertain to the fitness or use of that asset as being purchased. Riggers, movers, electricians and buyers performing work at the Auction Site must provide PMI with evidence of insurance. The insurance coverage must be at a level acceptable to PMI and to the seller. PMI reserves the right to withdraw items, alter the order of the sale, accept bids from the seller, and group lots as it may deem appropriate. This auction may include consignment items.

Although all information has been obtained from sources deemed reliable, the auctioneer and seller make no warranty or guarantee, expressed or implied, as to the accuracy of the information herein contained, or contained in our catalog. It is for this reason that buyers should avail themselves of the opportunity to make inspection prior to the auction. Although it is not likely, auction sales are subject to cancellation or postponement. Kindly contact auctioneer prior to attendance.

These terms and conditions may be modified or supplemented by language in the catalog available at the sale site or by announcement at the start of the sale. Bidders should be attentive to those announcements and to the catalog language.